

# WHAT IS GALINJERA?

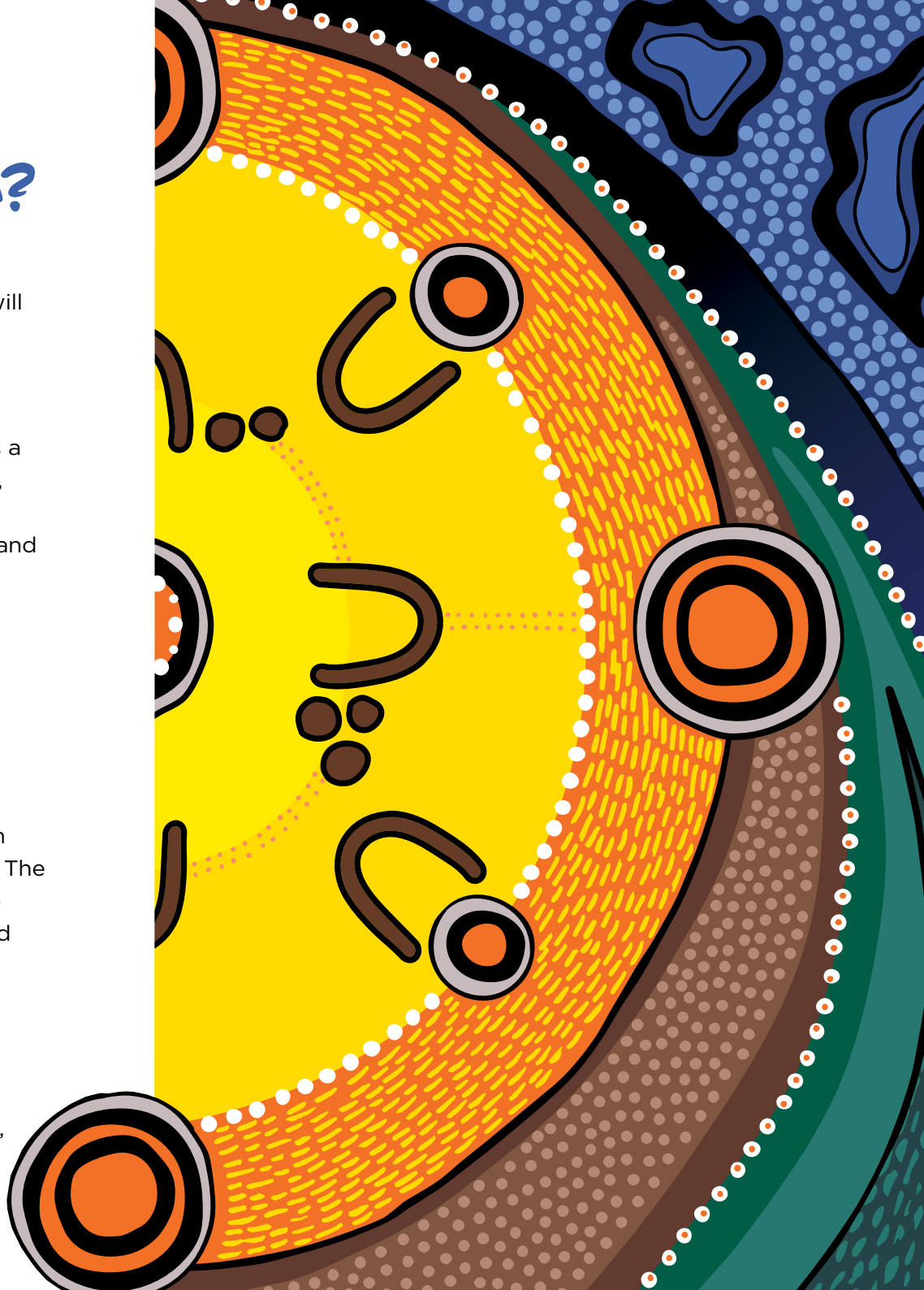
If you or your baby are Aboriginal and/or Torres Strait Islander, you will be offered care through the Galinjera Maternity Program at Sunshine Hospital.

The Galinjera Maternity Program is a small team of dedicated midwives, who will provide care to you throughout your pregnancy, birth and beyond.

Regular visits with a midwife you know and trust is important so that you and your baby feel safe, supported and well cared for.

The midwives and doctors of the Galinjera team are committed to providing you and your family with culturally safe and respectful care. The Galinjera team work in partnership with the Aboriginal Health Unit and Koori Maternity Services at Sunshine Hospital.

If you are interested in taking part in the Galinjera Maternity program, please let the Midwife or Doctor know OR contact the team at [Galinjera@wh.org.au](mailto:Galinjera@wh.org.au)



# GALINJERA MATERNITY PROGRAM



Providing continuity of midwifery care for you and your Boorai at Sunshine Hospital.



Western Health

## ACKNOWLEDGEMENT

Western Health would like to pay our respects to the Wurundjeri people of the Kulin Nations, the Traditional Owners of the land on which Sunshine Hospital is located. We also acknowledge all of the women who have birthed on this land and the courage, wisdom and resilience of Aboriginal women.

## THE GALINJERA ARTWORK

The Galinjera artwork was commissioned by Western Health and created by artist Annie Joy. Annie is of Wergaia and Gormanjanyuk country of Mallee Victoria.

*Galinjera means 'to come together and connect with love'.*

The circle in the centre is the campfire and spirit, keeping the families warm and connected.

The Mummas and babies are represented sitting around the campfire. Everyone is connected and in tune.

The green, blue and brown represent the elements – green for trees that breathe with us, brown for country, blue for river and sky. The orange and yellow are our ancestors and our connection to ourselves and each other.

## ABORIGINAL HEALTH UNIT AND KOORI MATERNITY SERVICES

You can find the Aboriginal Health Unit and Koori Maternity Service (KMS) on the ground floor of the main building. It's a cosy place to share a cuppa, have a yarn and meet the AHU team who can help with accessing the support you need.

The KMS Co-ordinator can support you and your family in pregnancy, birth and after bub is born.

The KMS Co-ordinator can attend appointments with you, help you understand what's happening and support you with what you need to make bubs arrival a happy and healthy one.

For more information contact [aboriginalhealthunit@wh.org.au](mailto:aboriginalhealthunit@wh.org.au) or phone **8345 0949**



## WOMAN'S JOURNEY

Galinjera is part of a multi-site project entitled Woman's Journey and has been developed in consultation with VACCHO and in partnership with La Trobe University. Woman's Journey is a project that aims to improve mother and baby outcomes for Aboriginal and/or Torres Strait islander families through continuity of midwifery care.

